


Please contact North Arkansas Electric Cooperative's engineering department at 870-895-6213 before beginning work.

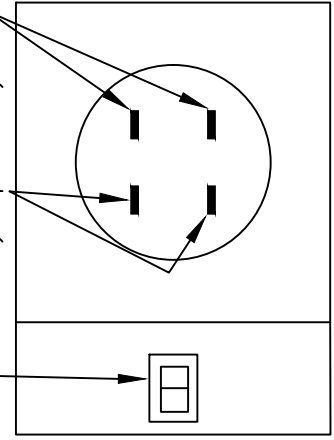
Revisions			North Arkansas Electric Cooperative, Inc.		Revision, Addendum or Change		
RE	Added Wiring Diagram						00000
RE	Revised 2' below footing area						00000
SP	11111						00790
			Underground Service				
Date		Drawn By	Scale	Dwg. No.			
#	Description	Date	101901	RE	urd_serv.dwg		

Front View Of Meter Base Wiring Diagram

Top Lugs - Transformer Side Reserved For NAEC.

Bottom Lugs - Breaker Side Reserved For Customer.

Disconnect Switch



The meter compartment of a meter base with a capacity above 100 amps must be at least 11 inches wide

Ring-type meter bases will not be accepted

Meter Base 5 to 6 feet Above Ground Level
Weather Proof Underground Type Combination Box

Service Disconnect Required per National Electric Code Article 230.70

Two Inch Rigid Steel, Rigid Galvanized or UL approved Sch80 PVC Conduit

Conduit Straps 2 ft Apart

#4 Copper Ground Wire to attach to the ground rod
Min. of 5/8"x 8' Ground Rod Driven flush with, or below ground level

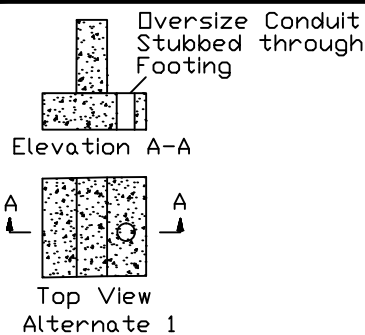
Finished Grade

Minimum 24" of cover over the top of conduit

Distribution Panel

Nipple With Lock Nuts & Fiber Bushings

Primary Wire Size	Amp. Service	100	200	320
	AL.	#2	4/0	2 Sets 4/0
Ground Wire Size	Cu.	#4	2/0	2 Sets 2/0
	Cu.	#4	#4	#2



Sweep 'L' or 1/8 Bend

Small Trough Area May Be Chipped off Footing To Support Conduit

End of Sweep on Undisturbed Earth